

RESOLUTION AMENDING VOTER PRECINCT BOUNDARIES

WHEREAS, precinct boundary modifications to limit the number of active registered voters must be accomplished by resolution and passed by the Board of County Commissioners; and

WHEREAS, RCW 29A.16.050 requires voting precincts to be wholly within a single city, congressional, legislative and county commissioner district; precinct boundaries to be contiguous and compact as nearly as practicable; and

WHEREAS, RCW 29A.16.040 requires the number of active registered voters in a precinct not to exceed one thousand five hundred active registered voters;

NOW THEREFORE, be it resolved by the Board of County Commissioners, in regular session, hereby amend the following voting precinct boundaries in Kitsap County, Washington as shown in attachments to this resolution (Attachment 1 – Amended Precincts List and Attachment 2 - Maps), in accordance with state law:

ADOPTED this 26th day of April 2021.

**BOARD OF COUNTY COMMISSIONERS
KITSAP COUNTY, WASHINGTON**



ROBERT GELDER, Chair



EDWARD E. WOLFE, Commissioner



CHARLOTTE GARRIDO, Commissioner



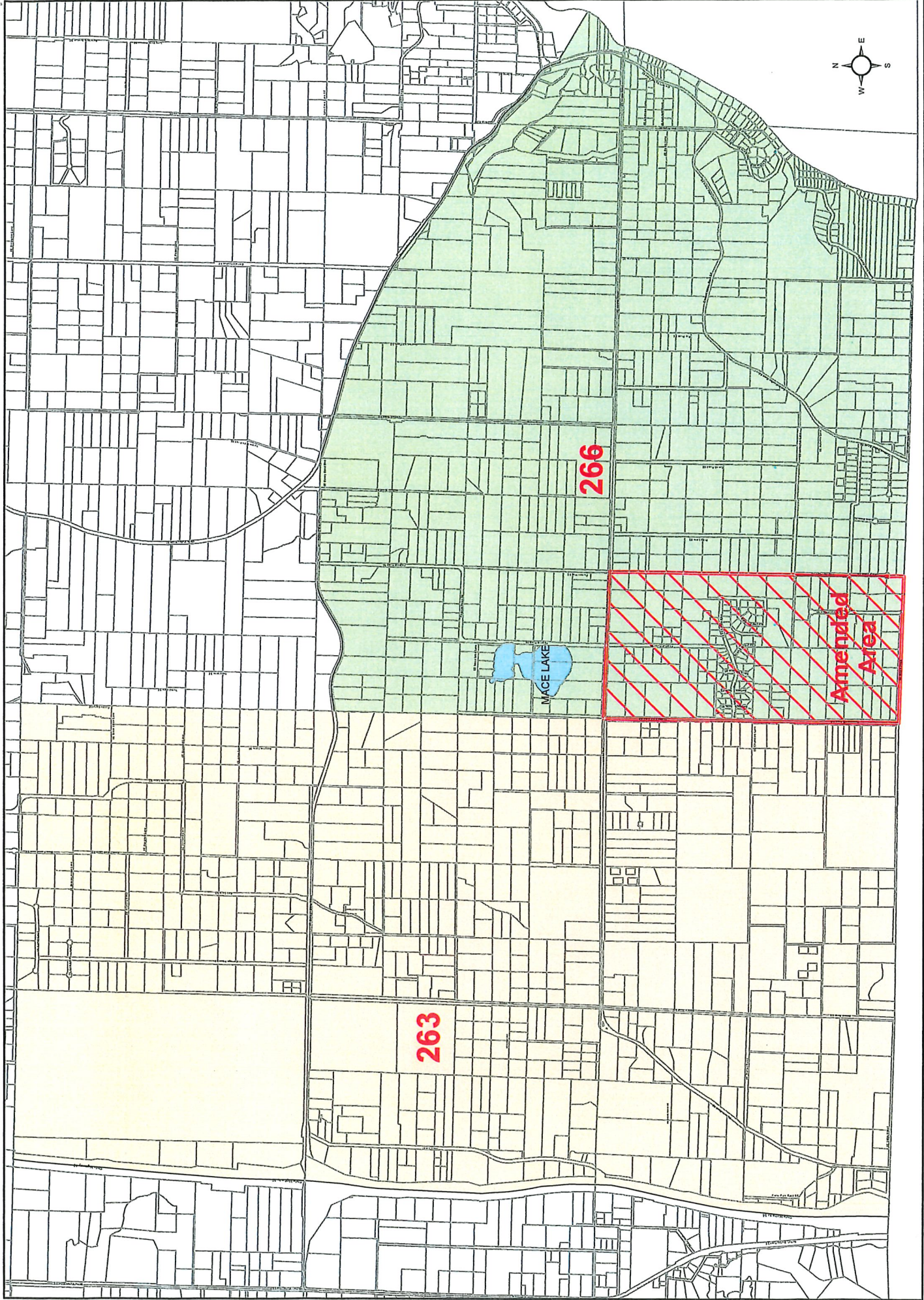
ATTEST:



Dana Daniels, Clerk of the Board

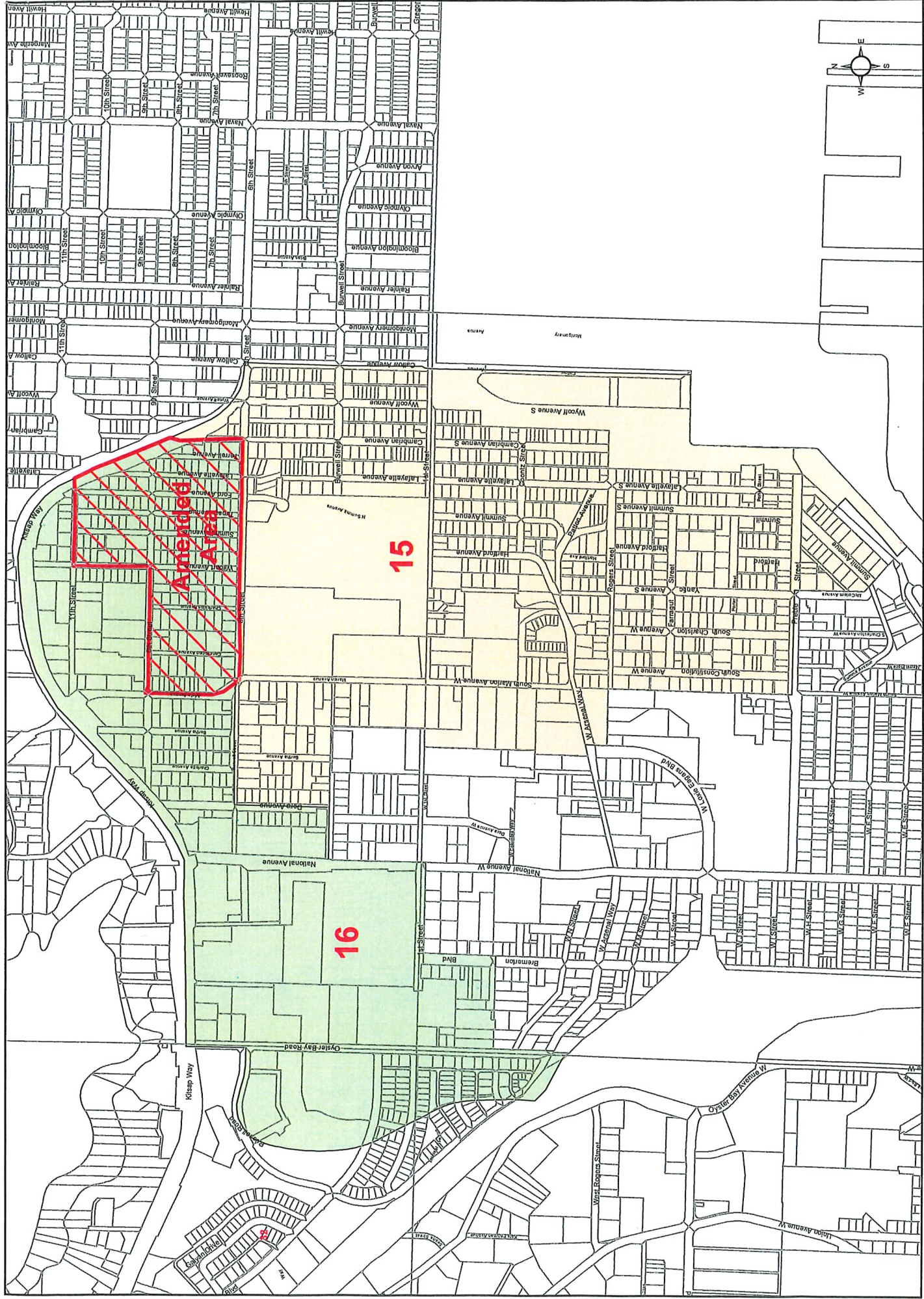
Attachment 1: 2021 Amended Precincts List

Precinct	Change
15 Bremerton	Amended to 16
16 Bremerton	Amended from 15
263 Bandix	Amended to 266
266 Crescent Valley	Amended from 263



Precinct 263 Bandix
Precinct 266 Crescent Valley

Legend:
[Yellow Box] Precinct 263
[Green Box] Precinct 266



Precinct 16
 Precinct 15

Precinct 15 Bremerton
 Precinct 16 Bremerton

